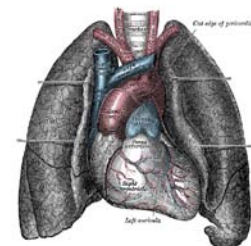


# Modeling Neural Control of the Cardiovascular and Cardiopulmonary Systems



## VCU/NHLBI Spring 2010 Conference Agenda

### Wednesday, 17 March 2010

#### Registration and Dinner Reception at Lewis Ginter Botanical Garden (Robins Room)

<http://www.lewisginter.org/>

6:00 pm to 9:00 pm

Lewis Ginter Botanical Garden is right off Interstate 95 and is convenient to Interstates 64 and 295. Located at 1800 Lakeside Avenue in Richmond, Va., the Garden sits at the corner of Lakeside Avenue and Hilliard Road. It is just minutes north of downtown Richmond and is close to many other area attractions, accommodations and dining. If you need help with directions, please call (804) 262-9887, ext. 300. If you are staying at the hotel and need a ride, taxi up to the banquet (~\$20) get a receipt and we will reimburse you. Others may be riding and we can fix you up with a ride as well.

### Thursday, 18 March 2010

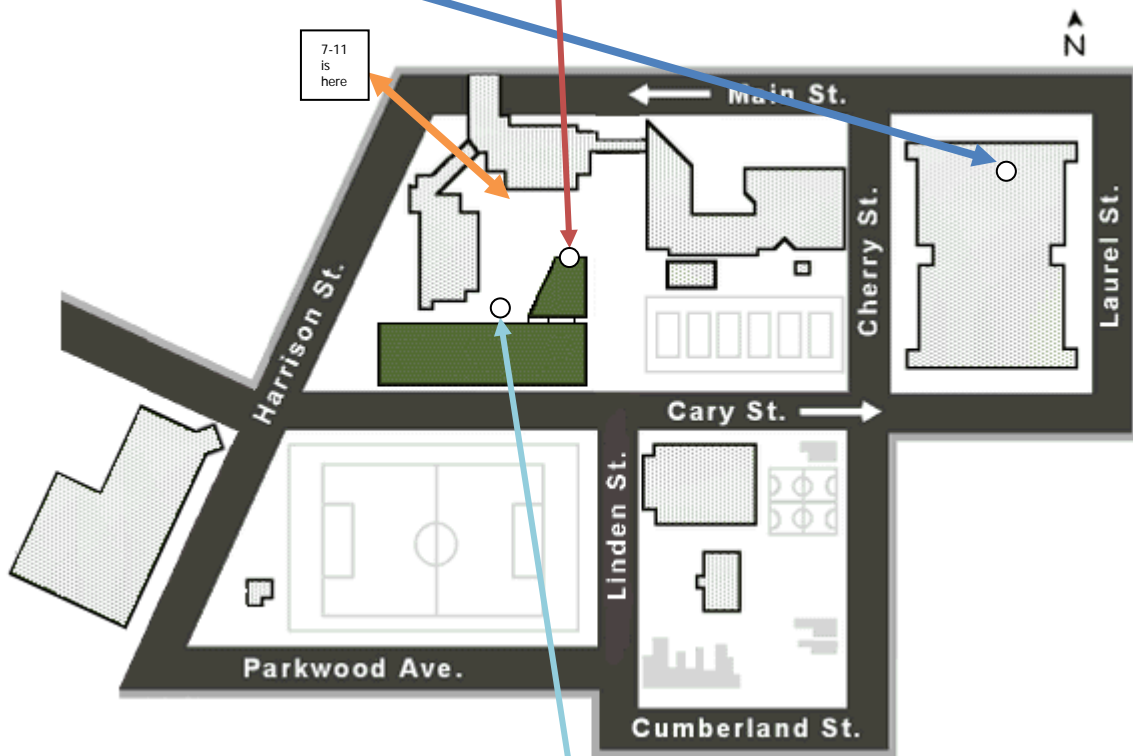
8:00 am to 8:30am	Continental Breakfast (Trani Life Sciences Main Building, Room 116)
8:30 am to 9:40 am	<b>Speaker:</b> Vera Novak, Harvard Medical School <b>Title:</b> <i>Cardio-respiratory-locomotor coupling</i>
9:45 am to 10:00 am	Break for discussion and coffee/juice (Trani Life Sciences Main Building, Room 116)
10:00 am to 11:10 pm	<b>Speaker:</b> Mette Olufson, North Carolina State University <b>Title:</b> <i>Modeling and model analysis in autonomic regulation of heart rate and autoregulation of cerebral blood flow</i>
11:15am to 12:25pm	<b>Speaker:</b> Ilya Rybak, Drexel University College of Medicine <b>Title:</b> <i>Computational modeling of neural control of respiration</i>
12:25 pm to 1:00 pm	Lunch in the Trani Life Sciences Main Building, Room 116 conference room and group discussion/dialog
1:00 pm to 2:30 pm	<b>Speaker:</b> Bruce G. Lindsey, University of South Florida <b>Title:</b> <i>Brainstem neural circuits for breathing: Connectivity, computational models, and cardio-respiratory coordination</i>
2:30 pm to 3:00 pm	Break for discussion and coffee/juice(Trani Life Sciences Main Building, Room 116)
3:00 pm to 4:30 pm	<b>Speaker:</b> J. Andrew Taylor, Harvard Medical School <b>Title:</b> <i>Observation and Estimation of Human Cardiovascular Autonomic Control: When Does the Physiology Coincide?</i>
5:00 pm to 8:00 pm	Dinner in the Trani Life Sciences Main Building, Room 116 and group discussion/dialog

Friday, 19 March 2010	
8:00 am to 8:30 am	Continental Breakfast (Trani Life Sciences Main Building, Room 116)
8:30 am to 10:00 am	<b>Speaker:</b> James Schwaber, Thomas Jefferson University <b>Title:</b> <i>Genomes to Homeostasis (G2H): Central Autonomic Orchestration in Hypertension</i>
10:00 am to 10:30 am	Break for discussion and coffee/juice (Trani Life Sciences Main Building, Room 116)
10:30 am to 12:00 pm	<b>Speaker:</b> André Diedrich, Vanderbilt University <b>Title:</b> A model to predict spontaneous blood pressure fluctuations using sympathetic neural nerve traffic.
12:00 pm to 1:00 pm	Lunch in the Trani Life Sciences Main Building, Room 116 and group discussion/dialog
1:00 pm to 2:30 pm	<b>Speaker:</b> David Goldstein, National Institutes of Neurological Strokes and Disorder <b>Title:</b> <i>Computer Models of Stress, Allostasis, and Acute and Chronic Diseases</i>
2:30 pm to 3:00 pm	Break for discussion and coffee/juice (Trani Life Sciences Main Building, Room 116)
3:00 pm to 4:30 pm	<b>Speaker:</b> George E. Billman, Ohio State University <b>Title:</b> <i>Cardiac autonomic remodeling and susceptibility to sudden cardiac death: the effect of exercise training</i>
5:00 pm to 8:00 pm	Dinner in the Trani Life Sciences Main Building, Room 116 and group discussion/dialog

Saturday, 20 March 2010	
8:00 am to 8:30am	Continental Breakfast (Trani Life Sciences Main Building, Room 116)
8:30 am to 10:00 am	<b>Speaker:</b> Kun Hu, Brigham & Women's Hospital / Harvard Medical School <b>Title:</b> <i>Influences of the circadian system on fractal patterns of heart rate fluctuations</i>
10:00 am to 10:30 am	Break for discussion and coffee/juice (Trani Life Sciences Main Building, Room 116)
10:30 am to 12:00 pm	<b>Speaker:</b> Michael Pencina, Boston University <b>Title:</b> <i>Development of Framingham cardiovascular risk prediction algorithms</i>
12:00 pm to 1:00 pm	Lunch in the Trani Life Sciences Main Building, Room 116 and group discussion/dialog
1:00 pm to 2:30 pm	<b>Speaker:</b> Jeffrey L. Ardell, East Tennessee State University <b>Title:</b> <i>Targeting the Cardiac Nervous System in treatment of heart disease</i>
2:30 pm to 3:00 pm	Break for discussion and coffee/juice (Trani Life Sciences Main Building, Room 116)
3:00 pm to 4:30 pm	<b>Speaker:</b> Tarynn M. Witten, Virginia Commonwealth University <b>Title:</b> <i>Where have we come from and where are we going – Review and looking forward</i>
5:00 pm to 8:00 pm	<b>Closing Banquet at Lewis Ginter Botanical Gardens (Azalea Room)</b>

<p style="text-align: center;"><a href="http://www.lewisginter.org/">http://www.lewisginter.org/</a></p> <p>Lewis Ginter Botanical Garden is right off Interstate 95 and is convenient to Interstates 64 and 295. Located at 1800 Lakeside Avenue in Richmond, Va., the Garden sits at the corner of Lakeside Avenue and Hilliard Road. It is just minutes north of downtown Richmond and is close to many other area attractions, accommodations and dining. If you need help with directions, please call (804) 262-9887, ext. 300. If you are staying at the hotel and need a ride, taxi up to the banquet (~\$20) get a receipt and we will reimburse you.</p>	
<p><b>Sunday, 21 March 2010</b></p>	
<p>6:00 am to 12:00 am</p>	<p>Everyone departs</p>

**Directions to the Conference:** The conference is being held in the **Eugene and Lois P. Trani Life Sciences Center, Teaching Wing, Room 253**. As you all know, parking is very difficult on campus so try to arrive as early as possible so that you can find a parking spot. If you park in the **Cherry Street parking deck**, be sure to get a receipt for each time you park there so that we can reimburse your parking. This is a public parking deck. Hopefully it will be free parking as it is reading day at the university.



All lunch and dinner meals (except for the opening and closing banquets) will be held in the Trani Life Sciences Center Conference Room (Room 116). Doubletree guests just ask the taxi to drop you off at the 7-11 on the corner of Harrison and Main. Cross the street into the quadrangle. Use the map above as your guide.