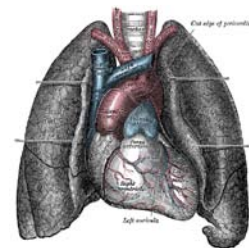


# MODELING THE HEART IN 3D

## VCU/NHLBI Fall 2009 Conference Agenda



### Wednesday, 14 October 2009

#### Registration and Dinner Reception at Lewis Ginter Botanical Garden (Robins Room)

<http://www.lewisginter.org/>

6:00 pm to 9:00 pm

Lewis Ginter Botanical Garden is right off Interstate 95 and is convenient to Interstates 64 and 295. Located at 1800 Lakeside Avenue in Richmond, Va., the Garden sits at the corner of Lakeside Avenue and Hilliard Road. It is just minutes north of downtown Richmond and is close to many other area attractions, accommodations and dining. If you need help with directions, please call (804) 262-9887, ext. 300. If you are staying at the hotel and need a ride, taxi up to the banquet (~\$20) get a receipt and we will reimburse you.

### Thursday, 15 October 2009

8:00 am to 8:30am

Continental Breakfast (Trani Life Sciences Main Building, Room 116)

8:30 am to 10:00 am

**Speaker:** Jose Jalife, University of Michigan Ann Arbor

**Title:** *Numerical and Biological Approaches to Investigate the Role of Fibrosis as a Modifier of the Vulnerable Substrate for Atrial Fibrillation*

10:00 am to 10:30 am

Break for discussion and coffee/juice (Trani Life Sciences Main Building, Room 116)

10:30 am to 12:00 pm

**Speaker:** Edward Hsu, University of Utah

**Title:** *Imaging-based structural models of the myocardium*

12:00 pm to 1:00 pm

Lunch in the Trani Life Sciences Main Building, Room 116 conference room and group discussion/dialog

1:00 pm to 2:30 pm

**Speaker:** Fotis Sotiropoulos, University of Minnesota

**Title:** *Patient-Specific Simulations of Cardiovascular Hemodynamics: State-of-the-Art and Future Challenges*

2:30 pm to 3:00 pm

Break for discussion and coffee/juice(Trani Life Sciences Main Building, Room 116)

3:00 pm to 4:30 pm

**Speaker:** Amy Throckmorton, Virginia Commonwealth University

**Title:** *Biodevices for Circulatory Flow Augmentation in the Fontan Physiology*

5:00 pm to 8:00 pm

Dinner in the Trani Life Sciences Main Building, Room 116 and group discussion/dialog

### Friday, 16 October 2009

8:00 am to 8:30 am

Continental Breakfast (Trani Life Sciences Main Building, Room 116)

8:30 am to 10:00 am	<b>Speaker:</b> Tzung Hsiai, University of Southern California <b>Title:</b> <i>Cardiovasculature: A Dynamic Sensing and Actuating System</i>
10:00 am to 10:30 am	Break for discussion and coffee/juice (Trani Life Sciences Main Building, Room 116)
10:30 am to 12:00 pm	<b>Speaker:</b> Julius Guccione, UC San Francisco <b>Title:</b> <i>Computationally Efficient Formal Optimization of Regional Myocardial Contractility</i>
12:00 pm to 1:00 pm	Lunch in the Trani Life Sciences Main Building, Room 116 and group discussion/dialog
1:00 pm to 2:30 pm	<b>Speaker:</b> Edward J. Vigmond, University of Calgary, Canada <b>Title:</b> <i>Detailed, Large-scale Modeling of the Heart</i>
2:30 pm to 3:00 pm	Break for discussion and coffee/juice (Trani Life Sciences Main Building, Room 116)
3:00 pm to 4:30 pm	<b>Speaker:</b> Arun Holden, University of Leeds, United Kingdom <b>Title:</b> <i>Virtual tissue engineering – from intracellular calcium waves to remodeling in human atrial fibrillation</i>
5:00 pm to 8:00 pm	Dinner in the Trani Life Sciences Main Building, Room 116 and group discussion/dialog

### Saturday, 17 October 2009

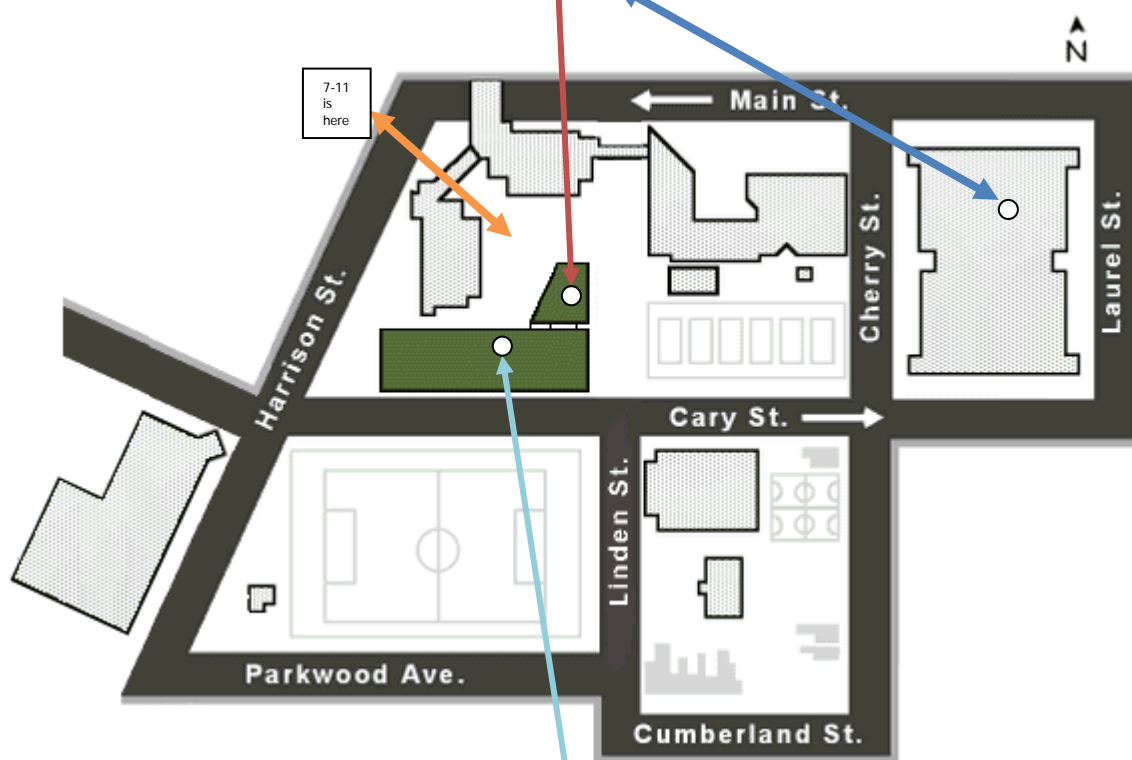
8:00 am to 8:30am	Continental Breakfast (Trani Life Sciences Main Building, Room 116)
8:30 am to 10:00 am	<b>Speaker:</b> Niels Otani, Cornell University <b>Title:</b> <i>The dynamics of action potential propagation—implications for initiating and terminating tachyarrhythmias</i>
10:00 am to 10:30 am	Break for discussion and coffee/juice (Trani Life Sciences Main Building, Room 116)
10:30 am to 12:00 pm	<b>Speaker:</b> Bradley J. Roth, Oakland University <b>Title:</b> <i>How the Heart Responds to an Electric Shock: The Biodomain Model</i>
12:00 pm to 1:00 pm	Lunch in the Trani Life Sciences Main Building, Room 116 and group discussion/dialog
1:00 pm to 2:30 pm	<b>Speaker:</b> Natalia Trayanova, Johns Hopkins University <b>Title:</b> <i>Three-dimensional image-based models of the heart in health and disease</i>
2:30 pm to 3:00 pm	Break for discussion and coffee/juice (Trani Life Sciences Main Building, Room 116)
3:00 pm to 4:30 pm	<b>Speaker:</b> Sasha Panfilov, Utrecht University, The Netherlands <b>Title:</b> <i>Modelling cardiac propagation in two, three dimensions and in anatomically accurate models of the heart.</i>
5:00 pm to 8:00 pm	<p><b>Closing Banquet at Lewis Ginter Botanical Gardens (Azalea Room)</b></p> <p><a href="http://www.lewisginter.org/">http://www.lewisginter.org/</a></p> <p>Lewis Ginter Botanical Garden is right off Interstate 95 and is convenient to Interstates 64 and 295. Located at 1800 Lakeside Avenue in Richmond, Va., the Garden sits at the corner of Lakeside Avenue and Hilliard Road. It is just minutes north of downtown Richmond and is close</p>

	to many other area attractions, accommodations and dining. If you need help with directions, please call (804) 262-9887, ext. 300. If you are staying at the hotel and need a ride, taxi up to the banquet (~\$20) get a receipt and we will reimburse you.
--	---

<b>Sunday, 18 October 2009</b>	
--------------------------------	--

6:00 am to 12:00 am	Everyone departs
---------------------	------------------

**Directions to the Conference:** The conference is being held in the Eugene and Lois P. Trani Life Sciences Center, Teaching Wing, Room 255. As you all know, parking is very difficult on campus so try to arrive as early as possible so that you can find a parking spot. If you park in the Cherry Street parking deck, be sure to get a receipt for each time you park there so that we can reimburse your parking. This is a public parking deck.



All lunch and dinner meals (except for the opening and closing banquets) will be held in the Trani Life Sciences Center Conference Room (Room 116). Doubletree guests just taxi drop you off at the 7-11 on the corner of Harrison and Main. Cross the street into the quadrangle. Use the map.