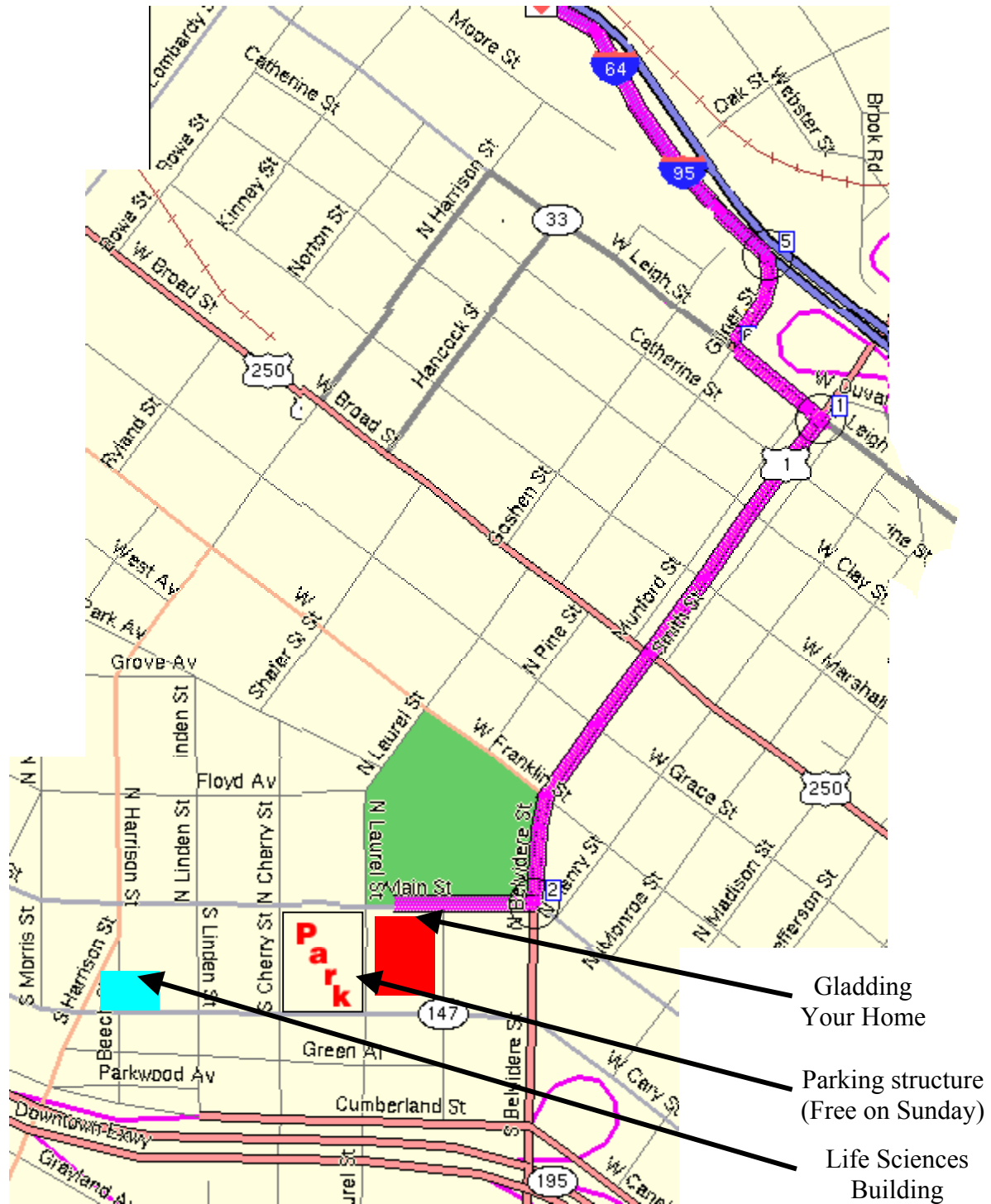


How to get to Gladding III, Virginia Commonwealth University, from the North or West

- 1a. From North, approach from I-95
- 1b. From West, approach from I-64
2. I-95 and I-64 merge seamlessly with each other within Richmond
3. Get off at Belvedere exit (also known as Chamberlayne). Exit deposits you on Gilmer St, going south.
4. Turn left (first opportunity) onto Leigh St from Gilmer St.
5. Proceed two blocks until Belvedere (U.S. 1)
6. Turn right (south) on Belvedere
7. Proceed seven blocks (past a major intersection, Broad St) until Main St.
8. Turn right (west) on Main St. (one-way)
9. Proceed one block. Big park to the right. You'll pass the Engineering Building to the left. Gladding is next, on the left.
10. Park anywhere on the street. If you can't find parking on Main, there's infinite parking in the nearby parking deck. To get there, turn left at the next street (Laurel St, one-way). Entry to parking deck is immediately to the right. (For those who bought parking passes, this is where the car will live).
11. Check in at front desk of Gladding (entry only on Main St.).



(Pardon patchy map, the result of several superimpositions)

